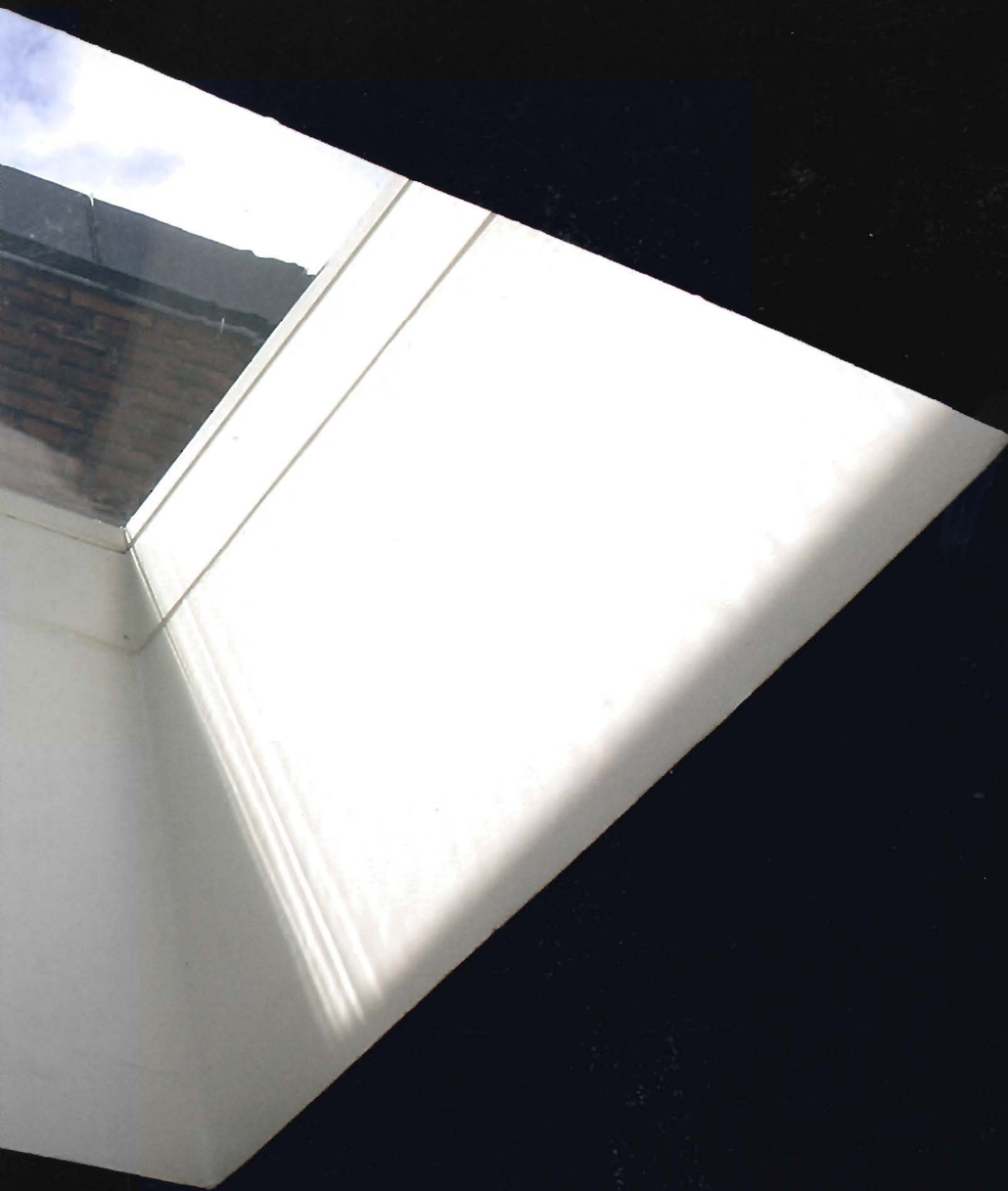
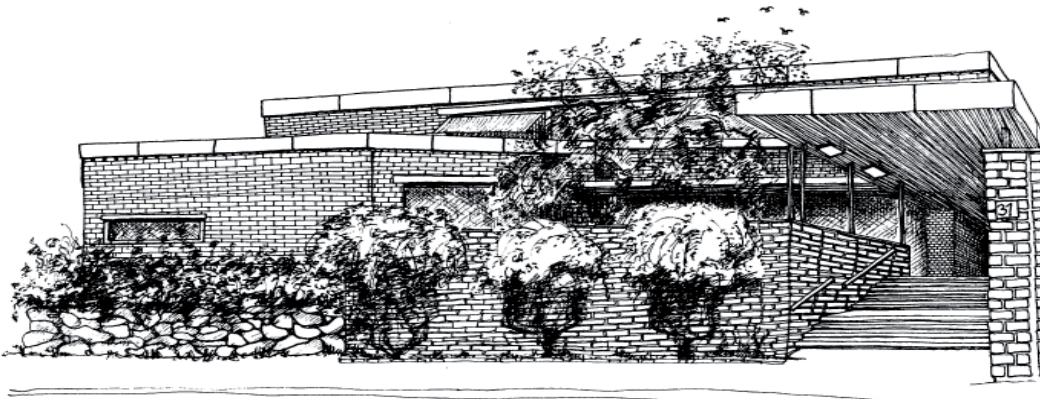


# Institute for Social Research ANNUAL REPORT 2006



Institutt for   
samfunnsforskning  
Institute for Social Research



Munthes gate 31, Oslo

## INSTITUTE FOR SOCIAL RESEARCH

The Institute for Social Research (ISF) is an independent foundation whose primary objectives are:

- To promote the study and understanding of social structures and social change,
- to develop practical and theoretical methodologies in the study of social conditions,
- and to encourage the development of professional skills.

Ever since its foundation in 1950, the institute has been multidisciplinary in its orientation. Today the institute pursues research not only in all branches of the social sciences, but in history as well. ISF is currently one of the few social science environments outside the univer-

sities that does not limit itself to the study of a particular segment of society. For further information see [www.socialresearch.no](http://www.socialresearch.no)

The institute's history and current position in social research bear witness to its long-standing desire to avoid drawing a sharp distinction between basic and applied research. Both types of research are pursued in the same environment. We also work with the University of Oslo on research projects and post-graduate education.

In recent years much emphasis has been placed on establishing contact with ministries and unions, with a view to communicating research findings and identifying research needs. This type of contact is time-consuming, but it is encouraging to experience a growing understanding of what social research can contribute and what its limitations are.

---

### Contact information

Institute for Social Research, Postbox 3233 Elisenberg, N-0208 Oslo, Norway

Visiting address: Munthes gate 31 Telephone: (+47) 23 08 61 00 Fax: (+47) 23 08 61 01

[isf@socialresearch.no](mailto:isf@socialresearch.no)

[www.socialresearch.no](http://www.socialresearch.no)

## DIRECTOR'S INTRODUCTION

Producing research of high quality is of course the prime objective of any research institute. After a long period during which political relevance tended to guide research, the Norwegian research community is placing greater emphasis on the production of articles for peer-reviewed international journals. The change is wholeheartedly supported by the Institute for Social Research. High quality peer reviews are the best guarantee of scientific quality. And there can be no doubt that as research commitments and partnerships in Europe multiply, Norwegian social science is bound to come under increased international scrutiny.

While articles for peer-review publication is essential to any self-respecting research establishment, it is not the only objective. Equally important is the writing and publication of books, whether in English or Norwegian. One reason is the opportunity books give for covering the wider ground, presenting a more coherent, synthesizing view, in contrast to the necessarily more fragmented, specialised character of the article. No less important is our relationship with the public. Books play a pivotal role here too, injecting new ideas and knowledge into debates on political and social issues. Book publication has been a hallmark of the Institute since its foundation, amply documented in the report by Sven Lindblad and Jon Haakon Hustad for the fiftieth anniversary of the Institute in 2000. Since then, researchers at the institute have published at least ten books every year dealing with matters as varied as the history of the Norwegian Supreme Court, social power, immigration, cooperative ownership and political elections, to mention a few.

The Institute is itself of course a publisher of journals or series, all of them open to authors outside the institute. *Tidsskrift for samfunnsforskning* [Journal for Social Research] serves the general Norwegian research community, whereas *Søkelys på arbeidslivet* [Focus on Work Life] has more specialised profile. For both, the editorial board and staff are located at the Institute. The yearbook *Comparative Social Research* and the *Nordic Journal of Political Economy* are English-language publications for an international readership, whose editorial committees are recruited from within and outside the Institute.

Such endeavors have their price, both in terms of money and human efforts. But high quality research have responsibilities outside its own domain, for the scientific community as a whole, as well as for the deliberations of the general public. Thus, these are also part of the challenges posed to a research institute with ambitions.



A handwritten signature in black ink, which reads "Fredrik Engelstad". The signature is written in a cursive, flowing style.

Fredrik Engelstad  
Institute Director

# SCIENTIFIC STAFF AND BOARD

## SCIENTIFIC STAFF

Staff input amounted to 48 person-years in 2006, with 33 from the scientific staff.

Research is divided into five areas

- Employment and working conditions
- Gender and society
- Civil society in transition
- Political institutions, voting and public opinion
- International migration, integration and ethnic relations

In all, 74 active research projects in these areas were ongoing in 2006.

### Scientific staff by discipline

Sociology	14
Political science	9
Economics	9
Social anthropology	4
History	3
Criminology	1
Human geography	1
Human rights	1
Total	42

### Researchers by competence

Research professor	10
Senior researcher	17
Research fellow	8
Research assistant	7
Total	42

## THE BOARD

*Appointed by the Norwegian*

*Research Council:*

Permanent secretary Anne Kari Lande Hasle  
Consultant Laila Stange (co-opted member)

*Appointed by the University of Oslo:*

Professor Aanund Hylland (vice-chairman)

Professor Helge Pharo (deputy member)

Professor Dag Album

Professor Signe Howell (deputy member)

*Appointed by the board at the Institute for Social Research:*

Professor Eivind Smith (chairman)

Adviser Terje Hauger (deputy member)

Professor Jon Elster

Political advisor Marianne Seip (deputy member)

*Appointed by the staff at the Institute for Social Research:*

Librarian Jon Haakon Hustad

Researcher Pål Schøne (deputy member)

Researcher Mari Teigen

Researcher Ragnhild Steen Jensen (deputy member)

## ADMINISTRATIVE STAFF

### Library

The library primarily serves the Institute for Social Research and Norwegian Social Research (NOVA). It has a collection of nearly 50 000 books, research reports, statistical publications, Norwegian parliamentary publications etc. Its bibliographical database is accessible via the Internet. The library also subscribes to approximately 290 Nordic and international journals and enjoys access to the most important bibliographical databases in the social sciences. Head librarian: Sven Lindblad.

### Information

The information department coordinates publication activities, liaises with the press and maintains the Institute's web pages. It organizes the practical side of lectures and seminars and performs editorial and secretarial services for selected journals and organizations. Head of information: Jørgen Moland.

### IT department

The IT department handles all aspects of IT resources at ISF, NOVA and National Centre for Documentation on Disability. The most important duties are maintaining the operation of the local net, simple database and spreadsheet programme development, and individual support on office programmes and statistics. IT manager: Nils-Eivind Naas.

### Project and administration department

The project and administration department keeps the Institute's accounts and handles the project administration. It is also responsible for mail services, reception and address databases. Office manager: Grete Svensen.

### Cafeteria

The Institute cafeteria serves the Institute for Social Research, NOVA and The National Centre for Documentation on Disability. Cafeteria manager: Wenche Skistad.



## EMPLOYMENT AND WORKING CONDITIONS

Labour market integration and the mobilisation of groups that experience difficulties in the labour market are prominent topics in today's research and policy debates. How does the labour market function for low-skilled workers and what kind of policies may work towards employment and better jobs? At the same time, wage dispersion seems to be on the rise, in particular at the top of the wage distribution. What are the reasons behind this development, and what are the consequences? What is the relationship between unions and the welfare state, and how do they interact in both the labour market and in the area of politics. Research on working life and labour markets is a long-standing commitment at the Institute for Social Research. Our group has expanded this year by the employment of new recruits.

The objective of the research is to understand more fully employee behaviour, business adaptation, public policy and the functioning of the labour market. Such knowledge is of general interest as a basis for understanding social development. It is also important as a basis for decisions in politics, business and working life. Scientific knowledge is of vital importance to goal setting and implementation. Findings are published in national and international academic journals, in ISF's own reports, and by means of verbal presentations conference papers.

The employment and working conditions research group is involved in a number of joint projects with centres outside Norway. They are financed by the EU, NOS-S and the Nordic Council of Ministers. This co-operation will be maintained and elaborated in the years to come.

### 2006 IN BRIEF

The employment and working conditions research group finalised a large research project this year, *Participation, Inclusion and Reward* financed by the Norwegian Research Council. The project was managed by Pål Schøne and included participants from The Frisch center, FAFO, and NTNU. The research focussed on the work place, and the contributors addressed questions such as: How widespread are new work practices? Which firms recruit immigrants? Is sickness absence higher or lower in new work organisations? To what extent do performance related pay systems affect wage differentials? Will firms applying new work practices and performance related pay live longer than other?

We were awarded several new projects from the Norwegian Research Council with start-up in 2006. These include topics like the costs and benefits of reallocation and reorganisation, topics related to the ownership structure of firms, the effects of immigrants on the labour market, and policies towards integration of immigrants in the labour market. In addition, we had several research projects financed by policy makers, such as the ministry of labour and integration and the ministry of children and equal rights.

In 2006, our group published their work internationally in the *Review of Economics and Statistics*, *Economica*, *Labour Economics*, *the British Journal of Industrial Relations*, *Comparative Sociology*, *Labour*, and the *Journal of Vocational Education and Training*. The themes range from income assimilation of immigrants, worker turnover, capital dispersion and matching to a study of business and labour elites in Germany and Norway. We also published five reports last year, each dealing with different aspects of the labour market.

## PROJECTS 2006

- Education and wage inequality in Europe
- Wage development for researchers in public sector
- Changing wage structures and bargaining regimes in the Nordic countries
- Employee involvement, skill upgrading, and pay – in new work organisations
- Wage development for women and men in prison and criminal administration
- Unemployment insurance and the dynamics of employment and economic exclusion among low income earners
- Labour force participation among persons with disabilities and the impact of the Cooperation Agreement on a more Inclusive Workplace.
- Labour market outcomes of low-skilled adults. The impact of unemployment benefits.
- Training and education offered by the Public Employment Service
- A viable welfare state. Equality and stability
- Analyses of the gender wage gap in Norway
- Analysis of total labour mobility 1990-2004
- Knowledge status on welfare contracts
- Dimensioning of active labour market programmes
- Changing work- the impact of reorganisation

and reallocation on establishment performance and well-being

- Labour market integration of non-western immigrants – identifying policies that work
- The Norwegian Bargaining model in an Equal Pay Perspective
- What does children mean for the gender wage gap?
- Strategic institute program on ownership: Challenges to the role of owner in modern economy

## STAFF

*Research Director:*  
Erling Barth

*Researchers:*  
Harald Dale-Olsen  
Trygve Gulbrandsen  
Inés Hardoy  
Marte Kari Huse  
Kjersti Misje Nilsen  
Marianne Røed  
Pål Schøne  
Kristine von Simson  
Aagot Elise Storvik



## GENDER AND SOCIETY

The study of gender as a social and cultural category and the impact of gender relations on other aspects of modern Norwegian society is an important research area within the Institute. This research is concentrated around three broad themes: work life and economy; family and children; and politics and policies. These thematic fields are closely interrelated, involving relations between the public and the private, and the state, market and civil society. Within this framework, we seek to describe, analyze and explain change and stability in gender relations, and how such factors interact with, and are part of, more general social and cultural processes.

In particular, we want to explore different aspects of gender equality in the general context of democracy and human rights, and how gender intersects with that of class and ethnic differentiation in the context of a growing post-industrial and multicultural society. Through a combination of empirical studies and theoretical work, and by integrating perspectives from different disciplines, our aim is to develop a critical reflection and broad theoretical understanding of these issues, and to contribute to a body of research which has both academic and practical value.

### 2006 IN BRIEF

A main area of research has been the study of new family forms and changing relations between parents and children after dissolution of marriage. Throughout the last ten years the numbers of parents choosing shared residence for children, have increased considerably. In this project we explore parents and children's experiences with this kind of custody arrangements. The study is based on a survey of parents practicing joint custody and qualita-

tive interviews with children spending half of the time in each of the parent's homes. The empirical findings from this project was published in the book *Delt bosted* (Shared custody) in January 2007 (Skjørten et al., 2007). The project is part of a general strategy to develop further research on new family forms as a locus of change in gender relations.

Another major strand of research focuses the relation between gender, capital and ownership within the modern Norwegian economy. This is a new research area within the Institute, which also forms part of the Strategic Institute Program on new forms of ownership. Empirical research and theorization on market and capital relations seems to be absent from most of today's gender research. In the ongoing project on gender, capital and ownership within Norwegian business life, an historical study and an empirical study of individual enterprises and family firms within contemporary Norwegian society are studied in combination.

A third research project studies policy making and discourses in the intersection of gender equality, integration/ethnic minorities and family policies. The purpose of the project is to analyze how issues of gender equality intersect with family politics and minority/integration politics. The project aims to analyze conceptions of integration/ethnic minorities within family politics – and conceptions of family and gender equality within integration politics. The questions addressed concern to what extent and how policymaking concerning gender equality – and family politics reflects and consider issues of integration politics, and vice versa. The empirical project will analyze political documents on family, gender equality and integration politics in general and select some specific cases directly involving these three dimensions. Finally, the Norwegian de-

bate will be compared to the Danish debates on these issues. This part of the project will be carried out in cooperation with the University of Aalborg, and associate professor Anette Borchorst.

The Gender and society group was responsible for two larger arrangements for an external audience in 2006: In May 2006 we arranged a workshop on segregation processes in the labor market, with presentations from a wide range of prominent researchers within the field, the main lecture was held by Professor Harriet Bradley, University of Bristol, U.K. In September 2006 the Gender and society group hosted Professor Nancy Fraser, New School for Social research, New York, U.S., who visited ISF in connection with the Vilhelm Aubert seminar. Nancy Fraser gave the lecture "Reframing justice in a globalizing world". In addition the Gender and society group regularly arrange a row of lunch-seminars on relevant academic topics.

## PROJECTS 2006

- Children's and parents' experiences with shared physical custody.
- FOCUS (Fostering Caring Masculinities)

- The European Dimension.

- Gender, knowledge and ownership – a study of the cultural economy of modern gender relations.
- Ideals, Realities and Policies: A Comparative Study of Gender Cultures.
- Intersections: Gender equality politics, family politics and integration politics.
- Equal pay and labour market segregation: old issues –new questions.
- Post-industrial working time - new concepts, new realities?
- A Comparative Study of Gender Attitudes.

## STAFF

*Research Director:*  
Mari Teigen

*Researchers:*  
Johannes Bergh  
Anne Lise Ellingsæter  
Ragnhild Steen Jensen  
Anne Krogstad  
Trude Langvasbråten  
Kristin Skjørtén  
Jorun Solheim



## CIVIL SOCIETY IN TRANSITION

Research on civil society seeks to enhance our understanding of this segment, in contrast to "state" and "market" segments, for instance. We investigate developments in civil work, ownership and organization forms adding to the stock of data on all aspects of civil society. Research covers four main dimensions:

**Democracy and participation:** Civilians join forces in many different ways – clubs and societies, foundations, cooperations and self-reliance organisations – to achieve collective goals. Such bodies do not create profit for private owners and are relatively autonomous in relation to society outside. The legitimacy of civil societies used to be as conduits of political/democratic participation: they strengthen social bonds, they increase local engagement, and they function independently of state and market. There are signs that this function is under pressure.

**"Governance" – collaboration and steering:** The term "governance" covers a wide range of new relations between civilian, public and market based actors. In a European context, the interests in such relations are increasing. The research is concerned with issues connected to partnership and user contribution, financing and measures, and ownerships.

**Comparative studies of the voluntary sector:** The Institute for Social Research coordinated the Norwegian part of the Johns Hopkins study, which showed that Norway has greater local commitment than many other countries. Data of relevance to the study are updated regularly, aiding comparative studies.

**Property forms and civil society:** The foundation is a property form which in the main has escaped scholarly attention in Norway. During the last few years the activity of grant making foundations has increased, boosting interest in this type of property form. Foundation research at the Institute focuses on the comparative advantages of foundations as a means

for public and private actors to achieve public interest objectives.

### 2006 IN BRIEF

This year Karl Henrik Sivesind and Bernard Enjolras have actively participated in the CINEFOGO network, Civil Society and New Forms of Governance in Europe. This "Network of Excellence" is supported by the Sixth Framework Programme, Priority 7: New Forms of Citizenship and Cultural Identities of the European Union. CINEFOGO seeks to promote citizens' involvement and social participation in policy-making. This requires improved understanding of, for instance, multiple identities, active citizenship and organized civil society. CINEFOGO is a consortium of more than forty universities and research institutes, a number of public service institutions in 15 European countries, as well as Harvard University. A hundred or so researchers connect through CINEFOGO. Sivesind is the coordinator for the Norwegian part of the network.

Worth noting in 2006 were also Ørnulf Seippel's publication of results from the project "Sports as arena for Integration". ["Sport and Social Capital" *Acta Sociologica*, and "The Meanings of Sport: Fun, health, beauty or community?" *Sport in Society*]. The project utilised data on sports organizations (1999, 2002, 2004) and their members (2000, 2004). Seippel analyzed three sets of issues. The first question was that of change in the structure, economy and work (voluntary and paid) of sport organizations. The second question dealt with issues of gender, leadership and drop-out from sports, all as examples of social (dis-)integration in sport. Finally, the topic of know-how and professionalism in sport organizations was addressed.

Another important event in 2006 was the publication of *Plausible Prejudice* by Marianne

Gullestad. The book is a collection of essays on a range of topics, from individualized identification and the struggle to obtain a 'sustainable self-image' to national belonging and 'race thinking'. Gullestad argues that social actors construct racial and national boundaries by drawing on everyday-life experiences. This is how racial prejudice can become 'plausible prejudice'. In contrast to most studies of minority-majority relations, she does not focus on minority groups, but on the conventional wisdom of the politically dominant majority population.

- Voluntary work in sport organizations in Oslo
- Governmental tools and voluntary sport
- Sport democracy: participation and discourse
- CINEFOGO - Network of Excellence
- Norwegian images of 'Self' and 'Other'. A study of a transnational knowledge regime
- Visions and roles of Foundation in Europe
- Norwegian images of 'Self' and 'Other'. A study of a transnational knowledge regime

## PROJECTS 2006

- Public policies and voluntary associations in sports
- Sports as arenas of integration
- Fitness centres and sport clubs: Physical activities in modernity
- Participation of elderly people in voluntary organizations in Norway
- European Voluntary Associations network
- Social science data on sport and physical activity

## STAFF

*Research Director:*  
Bernard Enjolras

*Researchers:*  
Håkon Lorentzen  
Marianne Gullestad  
Hilde Lidén  
Ørnulf Seippel  
Karl Henrik Sivesind  
Anne-Lene Bakken Ulseth  
Ragnhild Holmen Waldahl



Research area

## POLITICAL INSTITUTIONS, VOTING AND PUBLIC OPINION

The study of political behaviour and democracy covers several areas: 1) the actors and institutions of representative democracy, and their interaction in a contemporary and historical perspective; 2) new forms of political participation, involvement and influence; 3) the "state of health" of democracy.

The changing relationship between voters and parties, with increasing volatility and unpredictability, requires constant monitoring and analysis.

Political participation has become a more complex phenomenon. A better understanding of what may be called the "the mechanisms of participation" is a major challenge for future research. This incorporates participation in both electoral and non-electoral arenas such as direct actions and citizen initiatives. An important question concerns whether participation in new arenas compensates for shrinking participation in conventional arenas, like elections.

If participation in political processes is going to strengthen confidence in political actors and the political system, it must be perceived as meaningful by the citizens involved. High trust and confidence cannot be taken for granted even in established democracies. In time, increasing political distrust and withdrawal could undermine the democratic system. In Norway we see increasing uneasiness particularly at the local level. Turnout is down at local elections and political recruitment is increasingly difficult. This calls for a closer scrutiny of the relationship between the local, regional and national level of government.

Immigration has introduced an ethnic component to the question of political participation and influence even in a homogeneous country like Norway. The political rights granted the Sámi minority also call for more research.

The mass media have become increasingly

important as a link between citizens and political leaders. Consequently, the interaction between voters, leaders and the media has captured the interest of students of social and political processes. New technology has opened up new channels of communication and information exchange. Studies of political communication in the mass media are vital in order to understand major trends in post-modern societies.

### 2006 IN BRIEF

The most important publications in 2006 deal among other things with consumer cooperatives, democratic conservatism, ethnic minorities' culinary entrepreneurship and social and political elites.

*Organisert kjøpekraft. Forbrukersamvirkets historie i Norge* (Organized spending power. The history of the Norwegian Consumer Cooperation) was published on the occasion of the Norwegian Consumer Cooperation's centenary, and as part of a larger project on the Cooperation. The book charts the history of the organisation, describes its inner workings and explains why the co-operative proved so successful in Norway. The book was edited by Even Lange.

A rich academic and political life was celebrated in February when professor Francis Sejersted turned 70. *Demokratisk konservatisme. Frihet, fremskritt og fred* (Democratic Conservatism. Freedom, Progress, Peace) was published to mark the occasion. Editors were Fredrik Engelstad, Even Lange, Helge Pharo and Erik Rudeng.

In Norway, in the last few decades, and especially in the capital, Oslo, a surprisingly quiet and little mentioned revolution has taken place – in the area of food. In *En stillferdig omveltning i matveien. Kulinarisk entreprenørskap blant*

etniske minoriteter (A Quiet Culinary Revolution – Culinary Innovation and Ethnic Minorities), Anne Krogstad discusses the transformation of city space through the entrepreneurial activity of ethnic minorities.

The latest volume of Comparative Social Research, entitled Comparative Studies of Social and Political Elites, is a historical and comparative study of political elites in Europe, their purpose and function. Two trends are particularly clear: The recruitment base for social elites is much wider today;; and sector elites are increasingly specialized. While this implies a democratization of elite formation, it also suggests that growing social complexity could undermine social and political governance. The articles on political elites investigate among other things tensions created by the conflicts between the EU policies and national political agendas, and the recruitment of women into political elite positions.

The first results from the 2005 national election study was published in in Samfunnsspeilet (3/2006), focusing on record high voter volatility.

## PROJECTS

- The Norwegian Election studies
- Delegation and responsibility in a multiparty system
- Power, democracy and ICT
- Digital elections
- The politics of welfare policy
- History of the consumer cooperatives
- National elites under pressure: Stability and change in elite structures and elite behaviour in a globalized world

## STAFF

*Research Director:*  
Bernt Aardal

*Researchers:*  
Rune Karlsen  
Anne Krogstad  
Even Lange  
Nils Rune Langeland  
Kari-Anne Svensen Malmo  
Eivind Merok  
Jo Saglie  
Francis Sejersted  
Guro Elin Stavn  
Iselin Theien  
Henry Valen



## INTERNATIONAL MIGRATION, INTEGRATION, AND ETHNIC RELATIONS

National challenges to international migration have to be analyzed as embedded in an international context, including the internationalization of the premises for political action. Consequently, research on multicultural society – be it the impact of human rights, access control or integration policies – need a comparative perspective, at the same time as more specific national factors are explored. An overarching perspective is how society should be organized in order to realize ideals of equality and equal treatment in combination with tolerance of difference. The interplay between ethnicity, religion, class and gender is central in understanding this broad field in which concepts like identity, trust, interest, pluralism, nationhood, exclusion and inclusion feed analysis. The research group makes use of qualitative methods (interviews, historical data, discourse analysis, fieldwork) as well as quantitative measures, such as surveys and statistic data.

### 2006 IN BRIEF

Keywords for the research projects of this group in 2006 are: Democracy and participation, conflicting rights in a multicultural setting, welfare state dilemmas in integration endeavors, asylum policies, ethnic minorities on the labour market, immigration history and citizenship theory.

Relatively new in the group's approach is cooperation with researchers of Law, both in the field of asylum policies and in relation to conflicting rights, e.g. freedom of religion versus equal rights related to women and children. The studies investigate different aspects of how international conventions and directives are incorporated into Norwegian policy. One research project focuses on dilemmas of admitting headscarves and other religious symbols in public spheres, concerns about legal plura-

lism and problems engendered at the interface between multiculturalism and democracy. One study explores the challenge on the incorporation of the UN Convention of Children's rights in the practice of asylum policy in Norway, discussing the status of accompanied children in their family's asylum application and the asylum children's rights to equal education, health and child care treatments. A third study deals with the asylum policies in the European Union, discussing how the Norwegian reception system stands when compared to the EU Directive on reception conditions.

The group has been involved in research that revolves around issues of participation – participation as citizens, political participation of immigrant groups, participation in the labour market, and questions about how the welfare state can be organized in ways that encourage and enable participation.

Research has also been undertaken on integration as a practical activity, as something people are employed to do in a range of institutional settings, most of them local and engaged in direct relations with clients and users.

Immigration history has been one of the priorities over the last years, and in 2006 a research project on the "Nordic welfare state and its others - 1945-2005" started up. The combination of economic success and high levels of social justice has drawn considerable interest to the Nordic welfare states from the international research community. Far less attention has been devoted to the Nordic solutions to the challenges arising from international migration and increasing cultural and ethnic diversity. The research project discusses how the welfare states with such high ambitions and strong sense of egalitarianism as the Nordic ones cope with the pressures of immigration and the challenges to national unity presented by growing immigrant populations.

This year a research fellow has been included in the research group. She will be working on the Nordic welfare state project. Her study will mainly deal with the changes in education and integrations policies.

The research project Informal child migration in Europe (N-ICME) investigates how informal networks of care constitute a social and cultural potential for children and adult caretakers involved in informal and illegal migration within and into Europe. The part project at ISF explores how informal child migration forms part of immigrants' strategies and how this is interpreted and dealt with by the Norwegian authorities.

## PROJECTS 2006

- Multicultural democracies and political integration in large cities. A comparative study
- The Nordic Welfare State and its Others - Immigration, Citizenship and Governance in Norway, Sweden and Denmark 1945-2005
- Integration and bureaucracy. Administration, knowledge and power in the multicultural city
- Evaluation of introductory programmes for newly arrived refugees
- Talking about labor market integration. Discourses, theories and alliances in Sweden

- Democracy, religious freedom and women's human rights
- Asylum seeker children and children rights
- Reception conditions for asylum seekers in Norway and the EU
- International students and immigration to Norway
- Transnational informal child migration in Norway: Dilemmas in international and national regulations on family life and citizenship
- Strategic institute program: Migration and democracy
- Ethnic minorities on the labour market: Knowledge on the problems of getting a job

## STAFF

Research Director:

- Hilde Lidén

Researchers:

- Tordis Borchgrevink
- Jan Paul Brekke
- Grete Brochmann
- Anniken Hagelund
- Jon Rogstad
- Idunn Seland



# RESEARCH DIRECTORS

- visions and challenges

We asked our heads of research to look into the crystal ball and make a few predictions on behalf of their own field of research and for the Institute as a whole. More precisely, we asked the following questions.

- How would you describe current status in your research field, here in Norway and in the wider world?
- Where do you think the frontier of research will be in about five or ten years?
- What is the biggest challenge likely to be for you and your team over the next decade?
- And for the Institute?

Gender and Society

MARI TEIGEN



PhD, Sociology

Researcher at the institute since 1994. Research Director from 2005.

Fields of interest: Gender studies, minority politics, positive action/quota policies

- Gender and the politics of equality are key areas of research in Norway, as in most European countries. In the wake of EU's promotion of sexual equality there has been an upswing in scientific interest in the subject – with Norwegian and Scandinavian experiences attracting quite a lot of attention, I think we can say. For Norwegian gender studies, a sharper focus on gender and differentiation – especially on grounds of ethnicity for example – will probably count as the main issue in the foreseeable future.

- One of the essential challenges facing gender studies in the coming years is to help consolidate and secure the principle of equality in multiethnic societies. Another pressing field for research concerns the reconciliation of work and family. But I also believe we will be asking questions relating to the individual's right to

autonomy while pursuing collective policies to improve equality and gender relations throughout society.

- As far as the gender research team and Institute are concerned, the challenges relate to initiating studies and developing a sound scientific platform for dealing with complex and very important questions in a systematic and dynamic way. It means exploring for instance the factors that shape gender relations and how different settings affect how gender and equality are brought into play.

Selected works by Mari Teigen:

Mari Teigen (2006), "Die norwegische Gender-Politik: Quoten und aktive Förderung (Positive action and quotas: The case of Norwegian gender policies)". WSI-Mitteilungen (3):138–143.

Hege Skjeie, Mari Teigen (2005), "Political Constructions of Gender Equality: Travelling Towards...a Gender Balanced Society?" NORA – Nordic Journal of Women's Studies 13:187–197.

## Employment and working conditions

### ERLING BARTH



PhD, Economics

Researcher at the institute since 1987. Research Director from 2005.

Fields of interest: Wage formation, labour supply and demand, mobility

- Labour market research covers many different fields. But what makes it so exciting lies in the opportunity to do basic science and research of practical use and relevance to policy making. The labour market is the foremost engine of economic growth and the main distributor of wealth. The challenge for labour market studies, particularly here in Norway, is to make better use of the excellent data that are available to us.

- Five to ten years down the line, theory, data and methods in labour market research will hopefully have converged more than is the case today. There is a lot to be gained from theoreticians, method developers and data producers working more closely together. But the main proposition is to conduct robust research, and get our results printed in the international scientific press.

- Looking to the Institute, the challenge will be to combine research at the international level with commissioned research insofar as they concern the balance between quality and relevance. This combination is a strength for our institute. Being good in several areas at once is still something of a challenge, however.

Selected works by Erling Barth:  
Bratsberg, Bernt, Erling Barth and Oddbjørn Raaum (2006), "Local Unemployment and the Relative Wages of Immigrants: Evidence from the Current Population Surveys", *Review of Economics and Statistics* 88(2): 243-263.

Barth, Erling, Trygve Gulbrandsen and Pål Schøne (2005), "Family ownership and productivity: the role of owner-management", *Journal of Corporate Finance*, 11(2):107-128.

## Civil society in transition

### BERNARD ENJOLRAS



PhD, Economics, PhD, Sociology

Researcher at the institute since 1998. Research Director from 2006.

Fields of interest: Civil society, voluntary organisations, commercialisation

- Civil society is changing under the pressures of individualization, globalization, the development of a knowledge and network society and new forms of governance. The main questions we are interested in are: what do these changes mean for voluntary work, the professionalization of voluntary organizations, social capital, citizenship, democracy and social integration.

- The main challenge facing civil society researchers is to conceptualize and analyze the interrelations between a post-national cosmopolitan civil society and the national and local civil societies. We hope in the short term to widen our national projects by including international concerns and research themes. We shall also be applying for funding from European bodies.

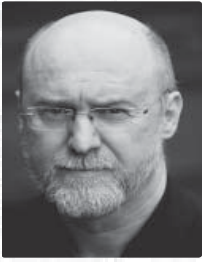
- The main challenge facing the institute is to keep its academic integrity in a world of increasing competition and internationalization of research.

Selected works by Bernard Enjolras:  
Enolras, Bernard (2002), "Does the Commercialization of Voluntary Organizations 'Crowd out' Voluntary Work?", *Annals of Public and Cooperative Economics*. 73(3):375-398

Enjolras, Bernard (2002), "The Commercialization of Voluntary Sport Organizations in Norway", *Nonprofit and Voluntary Sector Quarterly*. 31(3):352-376

Political Institutions, voting and public opinion

## BERNT AARDAL



Dr. philos, Political science

Leader of the Norwegian Election Studies since 1985. Research Director from 1994.

Fields of interest: Elections, Voters, Political parties, Public Opinion, Election Systems

- Given increasing volatility among voters and rapid social changes, our need to explore and understand political processes and the forces involved has greater urgency today than ever before. This is reflected the mounting interest for this type of research attracts both at home and abroad.

- The challenge for our field of study is to identify and interpret new political phenomena that are emerging both inside and outside of representative democracy . Of particular interest is the impact of new media and modern technology.

- For the research group, we need to make our funders understand the importance of developing the scientific foundation we have built up over many years.

- The main challenge facing the Institute is to maintain its scientific identity, which means finding the right balance between academic ambition and social and political relevance.

Selected works by Bernt Aardal:

Aardal, B. and P. Van Wijnen (2005). "Issue Voting". In: J. Thomassen, *The European Voter. A Comparative Study of Modern Democracies*. Oxford: Oxford University Press: 191-211.

Aardal, B. (2002), "Electoral Systems in Norway". . In: B. Grofman and A. Lijphart, *The Evolution of Electoral and Party Systems in the Nordic Countries*. New York: Agathon Press: 167-224.

International migration, integration and ethnic relations

## HILDE LIDÉN



Dr. polit, Anthropology

Researcher at the institute since 2000. Research Director from 2006.

Fields of interest: Children's rights, minority rights, immigration- and integration policy, gender, family

- In light of the shortage of labour in western countries, attitudes to migration are beginning to change. A new type of targeted labour immigration and more effective use of skilled labour in existing ethnic minorities are both under consideration by policy makers. It affects research in the area as well, of course. There is also increased concern about migration-related family problems. Social scientists are not preoccupied as such with cultural differences as a key to political problem-solving, but with co-citizenship, individual rights and discrimination.

- The international aspect of migration will occupy an increasingly central place in migration studies. It includes relations between sender and receiving countries and, for instance, the impact of EU treaties on a country's migration policy. Promoting integration via work, education and housing market remain local challenges, and as such part of the researcher's portfolio. IMER studies will lose some of their academic specificity as migration and integration increasingly inform all areas of social studies.

Selected works by Hilde Lidén:

Lidén, Hilde og Hilde Rusten (2007) "In 'the Best Interests of the Asylum Seeking child?'. New lessons from Norway". *Children and Society* no 2

Lidén, Hilde (2005), *Negotiating autonomy: Girls and parental authority in multiethnic Norway*. Goldsmiths series of Occasional Paper in Anthropology. London: Goldsmiths College, University of London.

# COMMUNICATING RESEARCH

Research is published in reports, books, journals, anthologies and communicated verbally at specialist conferences. While research is generally conveyed to clients in the form of reports or papers, verbal presentations, seminars and the popular press are used as well. Students and research fellows are kept up to date by teachers and advisors. A comprehensive list of reports, articles, books and conference papers is printed on page 22-27.

The Internet is the most important public information tool, with visits per day averaging in 2006 almost 900, up on 800 in 2005, and about 180 when registration began in early 2003.

## Reports

The Institute often publishes the results of its projects in Rapportør – Reports – one of the Institute's own series. Earlier numbers are available for downloading from our web pages at [www.samfunnsforskning.no](http://www.samfunnsforskning.no). Paper copies (and all of the books) can be ordered from the same page. Twelve reports were published in 2006, the same number as in 2005.

## [www.socialresearch.no](http://www.socialresearch.no)

Maintaining and updating the Institute's web pages is taken very seriously at the Institute. Researchers post new publications, projects and arrangements, write items of topical interest, abstracts and present publications and projects.

The design of our web site and its contents have not changed in 2006, during which visit counter recorded about 900 visits per day. This is the general average throughout the year, though there are spikes at the start of the academic terms. All in all, [samfunnsforskning.no](http://samfunnsforskning.no) had 300,000 separate visits in 2006, up on 260,000 in 2005, 180,000 in 2004 and 60,000 in 2003. The number of visits is high, suggesting that the typical visitor conti-

nues to explore many of the pages on the site. Subscriptions for our electronic news service rose to 831, up from 609 in 2005 and 375 in 2004. The figures refer to the number of entries, not individual subscribers. Subscribers who do not want the whole news package (285 persons) may be registered on several subgroups.

## Meetings, seminars and conferences

Researchers at the Institute meet clients and user groups on a regular basis, often informally in connection with the handing over of a project report, and at seminars attended by users.

The Institute hosted several arrangements for clients in 2006, including seminars and the Late Summer Get-together. Afternoon debates and book presentations are open to the public, clients, academics, journalists.

## ISF Abstracts

Abstracts are published every third month in ISF Sammendrag (ISF Abstracts), and include summaries of books published externally and articles printed in Norwegian and international journals and anthologies. The abstracts are published for the benefit of the media, government, organisations and research centres. Subscriptions are free, and can be registered on our web pages or by getting in touch with the Institute.

## ISF ONLINE

[www.samfunnsforskning.no](http://www.samfunnsforskning.no) | [www.socialresearch.no](http://www.socialresearch.no)

On the institute's web pages you can:

- Download reports, articles and journals in full text PDF
- Order all types of publications
- Read presentations of the institute's researchers and research projects
- Find links to Norwegian and international web resources in the social sciences
- Read and subscribe to news from ISF

## PUBLISHING AND EDITORIAL WORK

The staff at ISF publish results of research projects in institute reports, books, articles in journals and anthologies and as papers presentations at scientific conferences. Results can also be published at lectures, seminars and in the press. In addition, the researchers communicate their research through lectures and teaching of students and research fellows.

In addition to the ISF Report series, the Institute is responsible for the following four scientific journals:

### COMPARATIVE SOCIAL RESEARCH



The yearbook *Comparative Social Research* aims at furthering the international orientation in the social sciences. Each volume is concentrated on a specific topic, mostly of substantive, but also of methodological character. As a rule, the articles

presents two or more cases for comparison, be they nations, regions, organizations, or social units at different points of time. The themes of the most recent volumes have been the multicultural challenge, comparative studies of culture and power, and conscription in the armed forces. *Comparative Social Research* is published by Elsevier Science.

### NORDIC JOURNAL OF POLITICAL ECONOMY



*Nordic Journal of Political Economy (NOPEC)* is published twice a year. The editors welcome submissions from all areas of economics and social science. Submissions are subject to a standard referee process. The journal publishes articles that are

relevant to political and normative issues, survey papers for a general audience of economists and social scientists, inter-disciplinary papers as well as empirical research from the Nordic countries. The editors of the journal organise annual conferences.

### FOCUS ON THE LABOUR MARKET



*Søkelys på arbeidsmarkedet* (Focus on the Labour Market) is published biannually by the institute with financial support from the Ministry of Labour and Social Inclusion. The periodical is intended as a supplement to existing publications on the labour market and labour research, and it aims at making research findings available to a wider circle of readers.

### JOURNAL OF SOCIAL RESEARCH



In 1960, the Institute established the *Tidsskrift for samfunnsforskning* (Journal of Social Research). The journal is published by Universitetsforlaget (Norwegian University Press).

Aside from original articles by Norwegian researchers often based on empirical studies, the journal contains book reviews, debates on current issues, review articles and articles on research policy. Issues on special themes are also published.

## EDITORIAL WORK 2006

In 2006, the scientific staff at ISF were editors, guest editors, members of editorial boards and referees in a wide range of Nordic and international journals.

### Editor, guest editor, member of the editorial board

#### *International journals:*

- Acta Sociologica
- Comparative Social Research
- European Societies
- Gender & Society
- International review of social economy (RECMA)
- Nora - Nordic Journal of Women's Studies
- Nordic Journal of Political Economy
- Revista de Economía Pública
- Rhetorica Scandinavica
- The Annals of Public and Cooperative Economics
- The European Journal of Cultural Studies

#### *Norwegian journals:*

- Nytt Norsk Tidsskrift
- Prosa
- Samtiden
- Sosiologi i dag
- Sosiologisk tidsskrift
- Stat og styring
- Søkelys på arbeidsmarkedet
- Tidsskrift for samfunnsforskning
- Tidsskrift for velferdsforskning

### Referees

#### *International journals:*

- Acta Sociologica
- American Economic Review

- British Journal of Industrial Relations
- Ethnos
- European Journal of Cultural Studies
- European Societies
- European Sociological Review
- European Sport Management Quarterly
- Journal of Civil Society
- Journal of Ethnic and Migration Studies
- Journal of Labor Economics
- Journal of Population Economics
- Journal of Refugee Studies
- Labour Economics
- Marriage and Family Review
- Men and Masculinities
- Nora - Nordic Journal of Women's Studies
- Party Politics
- Scandinavian Journal of Economics
- Scandinavian Political Studies
- Scottish Journal of Political Economy
- Sexualities
- Social Anthropology/Anthropologie Sociale
- Social Policy and Administration
- The Journal of the Royal Anthropological Institute
- The Manchester School
- Quarterly Journal of Finance.

#### *Nordic journals:*

- Nordisk tidsskrift om maskulintetsforskning
- Norsk statsvitenskapelig tidsskrift
- Tidsskrift for kjønnsforskning
- Sosiologi i dag
- Sosiologisk Tidsskrift
- Statsvetenskaplig Tidsskrift
- Samtiden
- Internasjonal politikk
- Tidsskrift for ungdomsforskning

### Publication activities at ISF in 2006

Articles in international scientific referee journals	13
Articles in national scientific referee journals	15
Scientific monographs	5
Scientific books, textbooks or other autonomous publications	4
Articles in scientific books	12
Chapters or articles in textbooks, proceedings, scientific journals	19
Reports in own report series	11
Reports in external report series	10
Lectures/presentations of papers/posters	29
Articles and lectures in popular science	86
Editorials, feature articles, etc. published in periodicals and newspapers	30

## PUBLICATIONS 2006

### BOOKS

Bredal, Anja: *Vi er jo en familie. Arrangerte ekteskap, autonomi og fellesskap blant unge norsk-asiater*. Oslo: Unipax

Brochmann, Grete: *Hva er innvandring*. Oslo: Universitetsforlaget

Ellingsæter, Anne Lise og Arnlaug Leira: *Politicising parenthood in Scandinavia. Gender relations in welfare states*. Bristol: Policy Press

Engelstad, Fredrik, Even Lange, Helge Pharo og Erik Rudeng (red.): *Demokratisk konservatisme. Frihet, fremskritt, fred. Festskrift til Francis Sejersted*. Oslo: Pax

Engelstad, Fredrik: *Vad är makt*. Stockholm: Natur och kultur

Enjolras, Bernard: *Conventions et institutions*. Paris: L'Harmattan

Gullestad, Marianne: *Plausible Prejudice. Everyday Experiences and Social Images of Nation, Culture and Race*. Oslo: Scandinavian University Press

Krogstad, Anne: *En stillferdig omveltning i matveien. Kulinarisk entreprenørskap blant etniske minoriteter*. Oslo: Abstrakt forlag

Lange, Even (red.): *Organisert kjøpekraft. Forbrukersamvirkets historie i Norge*. Oslo: Pax.

### ARTICLES

Barth, Erling & Pål Schøne: «Lønnsforskjeller mellom kvinner og menn over livsløpet. Kohort eller karriere?» *Søkelys på arbeidsmarkedet*, 23 (2):231–235.

Barth, Erling & Pål Schøne: «Undersøkelser av lønnsforskjeller mellom kvinner og menn». I: *Om grunnlaget for inntektsoppjørelene 2006*. NOU 2006:11: 153–168.

Barth, Erling: «Lønnsforskjeller mellom kvinner og menn: Hva kan økononisk teori bidra med?» *RØST* (1-2006).

Berglund, Frode: «Same procedure as last year? On political behavior amongst senior citizens». *Encounters: Political Science in Translation*, 2 (1): 99–118.

Bratsberg, Bernt, Erling Barth & Oddbjørn Raaum: «Local unemployment and the relative wages of immigrants. Evidence from the current population surveys». *Review of economics and statistics*, 88 (2):243–263.

Brekke, Jan-Paul: «Utestengt fra velferdsstaten. Når asylsøkere med avslag blir værende i Norge». *Tidsskrift for velferdsforskning*, 9 (4):223–237.

Brochmann, Grete & Anniken Hagelund: «Innledning: Velferdsstat og innvandring – utfordringer for forskningen». *Tidsskrift for velferdsforskning*, 9 (4-2006):196–197.

Brochmann, Grete & Jon Erik Dølvik: «Arbeidsmigrasjon: Nye dilemmaer i et aldrende Europa». *Horisont - Næringspolitisk tidsskrift*, 2/2006

Brochmann, Grete & Jon Erik Dølvik: «Is immigration an enemy of the welfare state». I: D. Papademetriou (red.) *Europe and its immigrants in the 21st century*. Washington: Migration Policy Institute.

Dale-Olsen, H. (2006): «Estimating Workers' Marginal Willingness to Pay for Safety Using Linked Employer-Employee Data.» *Economica*, 73: 99-127

Dale-Olsen, H. (2006): «Using Linked Employer-Employee Data to Analyse Fringe Benefits Policies: Norwegian Experiences.» In Bryson, A., J. Forth and C. Barber (eds.), *Making Linked Employer-Employee Data Relevant to Policy*. DTI Occasional paper no. 4

Dale-Olsen, H. (2006): «Wages, Fringe Benefits and Worker Turnover.» *Labour Economics*, 13:87-106

Dale-Olsen, H. (2006): «Worker Turnover, Capital Dispersion and Mat-ching.» *LABOUR*, 20:395-431.

Dale-Olsen, Harald (2006): «Økende mobilitet i det norske arbeidslivet?» *Søkelys på arbeidsmarkedet*, 23 (1):3–11.

Ellingsæter, A.L. & A. Leira (2006): «Epilogue. Scandinavian policies of parenthood – a success story?» I: Ellingsæter, A.L. og A. Leira (red), *Politicising parenthood in Scandinavia. Gender relations in welfare states*. Bristol: Policy Press.

Ellingsæter, A.L. (2006): «The Norwegian child care regime and its para-doxes». I : A.L. Ellingsæter and A. Leira (red), *Politicising parenthood in Scandinavia. Gender relations in welfare states*. Bristol: Policy Press

Ellingsæter, A.L. (2006) : «Nordiske permisjoner for foreldre – et Columbi egg?» *Tidsskrift for velferdsforskning*, 9(2): 73-87.

Ellingsæter, A.L. og A. Leira (2006): «Introduction: politicising parenthood in Scandinavia». I: Ellingsæter, A.L. and A. Leira (red.), *Politicising parenthood in Scandinavia. Gender relations in welfare states*. Bristol: Policy Press

Engelstad, Fredrik: «'Demokratisk kapitalisme' - er det mulig?» I: Fredrik Engelstad m.fl (red.) *Demokratisk konservatisme: frihet, fremskritt, fred*. Oslo: Pax.

Engelstad, Fredrik: «Demokrati som konflikt - filosofi og politikk hos Chantal Mouffe». *Demo*, 6(1):45-48.

Engelstad, Fredrik: «Ubeheget i makten. Svar til Dag Østerberg». *Nytt Norsk Tidsskrift*, 23 (2). Oslo: Universitet sforlaget:174-177.

Gullestad, Marianne: «Barndom i Norge. Festskrift til Per Olav Tiller. » *Barn*, 2006 (2):41-56.

Gullestad, Marianne: «Imagined Kinship. The Role of Descent in the Rearticulation of the Norwegian Ethno-nationalism». I: Andre Gingrich and Marcus Banks (red.) *Neo-Nationalism in Europe and Beyond*. New York/ London: Berghahn Books:69-91.

Gullestad, Marianne: «Nær Afrika - Langt fra Paris og Brussel: Om norsk misjon og Norges forhold til EU». I: Fredrik Engelstad m.fl (red.) *Demokratisk konservatisme: frihet, fremskritt, fred*. Oslo: Pax.

Gullestad, Marianne: «Reconfiguring Scholarly Authority. Reflections Based on Anthropological Studies in Norway». *Current Anthropology*, 47 (6):915-931.

Gullestad, Marianne: «Services de proximité, sociabilité et contrôle social à Oslo». I: Roselyne de Villanova et Philippe Bonnin (red.) *Loges & gardiens*. Paris: Creaphis.

Hagelund, Anniken: «Why it is bad to be kind. Educating refugees to life in the welfare state. A case study from Norway.» I: Catherine J. Finer (red.) *Migration, Immigration and social policy*. Oxford: Blackwell.

Hardoy, Inés, Knut Røed, Hege Torp & Tao Zhang: «Virker ungdomsgaranti-en?» *Søkelys på arbeidsmarkedet*, 23 (1):21-30.

Hoelseth, Rune & Sven Lindblad: «Francis Sejersted : en bibliografi». I: Fredrik Engelstad m.fl (red.) *Demokratisk konservatisme: frihet, fremskritt, fred*. Oslo: Pax

Hydle, Ida & Anne Krogstad: «Antropologiske og retoriske vendinger.» *Rhetorica Scandinavica, Tidsskrift for skandinavisk retorikforskning* 2006 (40):4-8.

Jensen, Ragnhild Steen: «Det store spranget: Endringer i kvinneliv i Nord-Odal ». *Tidsskrift for samfunnsforskning*, 47 (1):95-107.

Jensen, Ragnhild Steen: «Likelønn og kjønn: gamle temaer, nye spørsmål?» *Søkelys på arbeidsmarkedet*, 23 (1):97-104.

Krogstad, Anne: «Retorikk, prinsipper og trillende terninger.» *Rhetorica Scandinavica, Tidsskrift for skandinavisk retorikforskning*, 2006 (40):40-62.

Lange, Even & Eivind Merok: «God gammel økonomisk historie». I: Fredrik Engelstad m.fl (red.) *Demokratisk konservatisme: frihet, fremskritt, fred*. Oslo: Pax

Lidén, Hilde: «'Pappa har ikke lyst til å være en dårligere foreldre enn mamma.' Kjønn, familieliv og delt bosted.» *Tidsskrift for kjønnsforskning* (4-2006).

Lindblad, Sven & Sten Høyendahl: «'Den retferdige Guds Vrede': Fattigdom og nødsår i Follo tidlig i 1740-årene». *Follominne*, (44): 77-103

Lorentzen, Håkon: «Commentary on Erik Amnå: Democracy and Civil Society». *Journal of Civil Society*, 2 (2):165-168.

Narud, Hanne Marthe & Henry Valen: «Det norske Storting: Et «folketing» eller en samling «politiske broilere?»» *Norsk statsvitenskapelig tidsskrift*, 22 (4): 359-392.

Nilsen, Kjersti Misje: «Har vi mindre jobbstabilitet i Norge?» *Søkelys på arbeidsmarkedet*, 23 (2):181-190.

Rogstad, Jon & Monica Lund: «Den demokratiske utfordring». I: Anne Britt Djuve, Hanne Cecilie Kavli og Monica Lund (red.) *Integreringskart 2006. IMDI-rapport nr 1*

Rogstad, Jon: «Innvandrere i alle land, foren eder». I: Arne H. Rolijordet (red.) *Kollektiv og individ. En debattbok om mangfold og fellesskap i individenes tidsalder*. Oslo: Gyldendal Akademisk.

Rogstad, Jon: «Den flerkulturelle bedriften - et spørsmål om moral?» *Horisont - Næringspolitisk tidsskrift*, 2/2006.

Schøne, Pål & Inés Hardoy: «The part-time wage gap in Norway: How large is it really?» *British Journal of Industrial Relations*, 44 (2):263-282.

Schøne, Pål: «Determinants and Developments of Employer Provided Training: Evidence from a Wage Compressed Environment». *Journal of Vocational Education and Training*, 58:237-254.

Schøne, Pål: «Hvor mye betyr barn for lønnsforskjeller?» *RØST* (1-2006)

Schøne, Pål: «Ottar Brox: Arbeidskraftimport. Velferdsstatens redning - eller undergang?» *Tidsskrift for velferdsforskning*, 9 (4):266-269.

Seippel, Ørnulf: «Sport and Social Capital». *Acta Sociologica*, 49(2):169-183.

Seippel, Ørnulf: «The Meanings of Sport: Fun, health, beauty or community?» *Sport in Society*, 9 (1):51-70.

Sivesind, Karl Henrik: «Hvor omfattende kan et frivillighetsregister bli? Notat til Arbeidsgruppe for utredning av etablering av et frivillighetsregister». I: Geir Woxholth (red.) *Frivillighetsregister*, NOU 2006:15. Oslo: Kultur- og kirke departementet.

Slagstad, Rune: "Professorturisten." I: Fredrik Engelstad, Even Lange, Helge Pharo og Erik Rudeng (red.) *Demokratisk konservatisme. Frihet, fremskritt, fred. Festskrift til Francis Sejersted*. Pax: Oslo:22-45.

Solheim, Jorun & Mari Teigen: «Det kjønnssegregerte arbeidslivet. - Likestillingens snublestein?» *Tidsskrift for kjønnsforskning* (3/2006):5-20.

Storvik, Aagoth Elise: «Glasstaket – metafor med utilsiktede virkninger? . Kjønns, ledelse og rekruttering i staten». *Sosiologisk Tidsskrift*, 14 (3):219-253.

Teigen, Mari: «Die norwegische Gender-Politik: Quoten und aktive Förderung». *WSI-Mitteilungen*, (3):138-143.

Teigen, Mari: «Holdning til likestilling - nye polariserings-tendenser». *Sosiologisk tidsskrift*, 14:254-275.

Teigen, Mari: «Kjønn og politikk». I: Jørgen Lorentzen og Wencke Mühleisen (red.) *Kjønnsforskning. En grunnbok*. Oslo: Universitetsforlaget:185-197.

Theien, Iselin: «From information to protection. Consumer politics in Norway and Sweden in the 1960s and 1970s». *Jahrbuch für Wirtschaftsgeschichte*, 2006/1:29-43.

Theien, Iselin: «Shopping for the 'People's Home'. Consumer Planning in Norway and Sweden after the Second World War». I: Chatriot, A., M.-E. Chessel og M. Hilton (red.) *The Expert Consumer. Associations and Professionals in Consumer Society*. Aldershot: Ashgate:137-150.

Valen, Henry: «Valgforsker på gjengrodde stier». *Tidsskrift for samfunnsforskning*, 47 (1):125-135.

Aardal, Bernt & Guro Elin Stavns: «Enda flere skifter parti». *Samfunnsspeilet* (3/2006):2-8.

## ISF REPORTS

Barth, Erling og Pål Schøne: *Nyere emner i arbeidsmarkedsøkonomien*. ISF-rapport 2006:011.

Brekke, Jan-Paul: *International students and immigration to Norway*. ISF-rapport 2006:008.

Dale-Olsen, Harald & Pål Schøne: *Omfang og effekter av vilkår i velferden. En kunnskapsstatus om velferdskontrakter*. ISF-rapport 2006:007

Dale-Olsen, Harald, Marianne Røed & Pål Schøne: *Omfang av arbeidsmarkedstiltak: Betyr det noe?* ISF-rapport 2006:012.

Hardoy, Inés, Knut Røed, Hege Torp og Tao Zhang: *Ungdomsgarantien for 20-24-åringene: Har den satt spor?* ISF-rapport 2006:4.

Rogstad, Jon: *Usaklige hindringer for ikke-vestlige mino-*

*riteter på arbeidsmarkedet i Norge*. Digital rapport. ISF-rapport 2006:010.

Schøne, Pål: *Lønnsnivå og lønnsforskjeller blant statsansatte 1987-2004*. ISF-rapport 2006:3.

Seippel, Ørnulf: *Frivillig innsats i Oslo-idretten*. ISF-rapport 2006:5.

Teigen, Mari: *Det kjønnsdelte arbeidslivet. En kunnskapsoversikt*. ISF-rapport 2006:2.

Theien, Iselin, Rolf K Andersen, Ole Alexander Opdalshei & Håkon Lorentzen: *Frivillige organisasjoner. En kommentert bibliografi 2006*. ISF-rapport 2006:009.

Aardal, Bernt: *How to lose a walk-over election? A preliminary analysis of the 2005 Parliamentary Election in Norway*. Digital rapport. ISF-rapport 2006:6.

## PAPERS

Allern, Elin Haugsgjerd & Jo Saglie: «The Changing Involvement of Interest Groups in Norwegian Electoral Politics». Paper presentert på arbeidsgruppa «Competitors to Parties in Electoral Politics: The Rise of Non-party Actors», ECPR Joint Sessions of Workshops, Nicosia, 25.-30. april 2006.

Allern, Elin Haugsgjerd: «The Relation of Norwegian Political Parties to Interest Organizations. A Comparative Analysis». Paper presentert på ESRC-seminaret «Hollow cartels or embedded institutions? The centre-right and «civil society», Leiden University, Leiden, 3. februar 2006.

Bergh, Johannes: «Class Voting and Issue Voting: A Trend-Analysis of Four Democracies.» Paper presentert på Nasjonal fagkonferanse i statsvitenskap, Bergen, 4.-6. januar 2006

Dale-Olsen, Harald: «Total mobilitet 1990-2004». ISF paper 2006:2

Ellingsæter, Anne Lise: «'Old' and 'new' politics of time to care: three Norwegian reforms». Paper presentert på konferansen «Welfare State Change. Conceptualisation, Measurement and Interpretation», Store Restrup Herregaard, Aalborg, 13.-15. januar 2006

Ellingsæter, Anne Lise: «Postindustrielle tidskontrakter». Foredrag, workshop «Könsperspektiv på ekonomiska begrepp, ekonomisk teori och ekonomiska relationer». Stockholm, 22.-23. februar 2006.

Engelstad, Fredrik: «Citizen power and the quality of democracy». Roberta Buffett Lecture 2006, Northwestern University, 4. oktober 2006.

Engelstad, Fredrik: «Reading Ibsen in a sociological perspective. - potentials and limitations». Paper presented at the 11th International Ibsen Conference, Oslo, 21.-27. august, 2006.

Enjolras, Bernard & Ragnhild Holmen Waldahl: «Policy-making in sports: the Norwegian case». Paper presented at the ECPR Joint Sessions Cyprus, april 2006.

Gulbrandsen, Trygve: «Elite integration and institutional trust in Norway». Paper presented at the 20th IPSA World Congress, Fukuoka, 9.-13. july.

Hagelund, Anniken: «Dealing with dilemmas. . Eller litt om livet blant snille bakkebyråkrater, introduksjonsprogram, makt, dilemmaer og løsningsstrategier». Paper presentert på workshop om innvandrere i de nordiske arbeidsmarkedene, fafo, Oslo, September 7, 2006

Jensen, Ragnhild Steen & Pål Schøne: «Female Managed Firms – Does it make a Difference?» Paper presented at the European Sociological Association's interim conference «Gender (in)equality in the European Labour Market». Lisboa, 6.-8. september.

Lidén, Hilde & Hilde Rusten: «Children's participation rights in Asylum Proceedings. -New lessons from Norway». Paper presentert på internasjonalt seminar om «Children as new citizens and the best interest of the child. Challenges to contemporary democracies». Trondheim 7-8 desember 2006 .

Lidén, Hilde: «Challenging Participation Rights of Young People . – Youth Council as a case». Paper presented at Participation. European conference in Trondheim February 20-21, 2006

Lidén, Hilde: «Migration policy and popular imagination of transnational marriages. Norway as case». Paper presentert på «Conference on Intermediated cross-border marriages in Asia and Europe». Taipei, Taiwan, 20. September 2006 .

Lidén, Hilde: «Oppvekst i flerkulturelle nabolag». Innlegg på workshop ved Sosialforskningsinstituttet i København. København, 15. juni .

Lidén, Hilde: «Skolen som arena for identitetsutvikling». Paper presentert på Vestlandskonferansen 2006: Barn og unge på flyttelasset. Bergen, 12 juni.

Røed, Marianne og Pål Schøne: «Does high product market competition benefit immigrants?» Paper presentert på EALE-konferansen i Praha, september 2006.

Røed, Marianne og Pål Schøne: «Does high product market competition benefit immigrants?». Paper presentert på Sosialforskningsinstituttet (SFI) i København, april 2006.

Røed, Marianne, Michael Rosholm og Pål Schøne: «Are New Work Practices and New Technologies Biased against Immigrant Workers?» Paper presented at the CREAM-Target conference in London, April 2006.

Saglie, Jo: «Massepartier i cyberspace? Om bruk av IKT i norske partier». Paper presentert på Nasjonal fagkonferanse i statsvitenskap, Bergen, 4.-6. januar 2006.

Seippel, Ørnulf: «Public Policies and Voluntary Organizations for Sport Facilities». Paper prepared for the conference 'Social Capital and Sport Governance in Europe: Trust and the Use of Social Ties'. 4th-5th December 2006, Bocconi University, Milan.

Seippel, Ørnulf: «Sports in civil society: Networks, social capital and influence». Paper presented for the XVI ISA World Congress of Sociology, Durban, 23-29 July, 2006.

Sivesind, Karl Henrik: «Depreciating social capital? Changes in Norwegian teenagers' participation in voluntary organizations from 1992 – 2002». Paper presented at the conference «Reassessing Civil Society, the State, and Social Capital: Theory, Evidence, Policy» Ullensvang Fjordhotell, Lofthus, Hardanger, Norway, 11-13, 2006.

Sivesind, Karl Henrik: «The Nordic Nonprofit Sector in Comparative Perspective – is there a Nordic Model of Civil Society?» Paper presented at the CINEFOGO conference «The Role and Organisation of European Civil Society – Its relationship to state and business and its importance for welfare provision and social cohesion», Comwell Hotel, Roskilde, 15.-17. november, 2006.

Sivesind, Karl Henrik: «The Scandinavian voluntary sector in comparison». Paper presented at the conference «Nordic Civicness Revisited in the Age of Association», organized by Centre for Civil Society Study and Development (KUAK), and Network on European Voluntary Associations, Tallinn University, 23.-25. November, 2006.

Sivesind, Karl Henrik: «Volunteering and social protection. The Nordic Countries in Comparative Perspective». Paper presented at the 16th World Congress in Sociology, International Sociological Association (ISA) i Durban, South-Africa, 23.-29 July, 2006.

Skjørten, Kristin: «Avisers fremstilling av vold mot kvinner i nære relasjoner». Paper presentert ved Forskerkonferanse Island 4.-7. mai, arrangør: Nordisk samarbeidsråd for kriminologi.

Skjørten, Kristin: «Co-deciding child in shared residence decisions». Children as 'new citizens' and the 'best interest of the child'. Research seminar, Trondheim, 7-8 december.

Teigen, Mari: «FOCUS – The European Dimension». Paper presented at Universitat de Girona, 21.10.2006

## EXTERNAL REPORTS

Barth, Erling & Claudio Lucifora: *Wage Dispersion, Markets and Institutions. The Effects of the Boom in Education on the Wage Structure*. IZA Discussion Paper No. 2181 Bonn: IZA - Forschungsinstitut zur Zukunft der Arbeit, 2006

Barth, Erling, Alexander W. Cappelen & Tone Ognedal: *Fair Tax Evasion*. Memorandum nr 07/2006, Department of Economics, University of Oslo, 2006

Barth, Erling, Bernt Bratsberg, Torbjørn Hægeland & Oddbjørn Raaum: *Who Pays for Performance?* IZA Discussion Paper No. 2142 Bonn: IZA - Forschungsinstitut zur Zukunft der Arbeit, 2006

Hardoy, Inés, Knut Røed & Tao Zhang: *Aetats kvalifiserings- og opplæringstiltak. En empirisk analyse av seleksjon og virkninger*. Rapport 4/2006, Frischsenteret, 2006

Jensen, Ragnhild Steen & Aagoth Elise Storvik: *Likelønn og kjønnssegregering: gamle tema, nye spørsmål*. UNIO-rapport, 2006 (AR 2006:008)

Kommunal- og regionaldepartementet: *Elektronisk stemmegivning - utfordringer og muligheter*. Oslo: Kommunal- og regionaldepartementet, 2006

Langvasbråten, Trude & Mari Teigen: *FOCUS - Fostering Caring Masculinities. The European Dimension*. Oslo: Likestillingsombudet/Institutt for samfunnsforskning, 2006

Rosholm, Michael, Marianne Røed & Pål Schøne: *Are New Work Practices and New Technologies Biased against Immigrant Workers?* IZA Discussion Paper No. 2135. IZA - Forschungsinstitut zur Zukunft der Arbeit: Bonn, 2006

Woxholth, Geir, et al: *Frivillighetsregister. Utredning fra en arbeidsgruppe oppnevnt av Kultur- og kirkedepartementet i august 2005*. NOU 2006:15 Oslo: Kultur- og kirkedepartementet, 2006.

Aardal, Bernt, Audun Beyer & Ragnar Waldahl: *Påvirkes velgerne av me-ningmålinger? Mulige konsekvenser av publiserte meningsmålinger*. Utredning for Kommunal- og regionaldepartementet, mars 2006.

## FEATURE ARTICLES

Barth, Erling: «Lønnsforskjeller mellom kvinner og menn.» NAVO Orienterer, 1/2006.

Brochmann, Grete: «Fortellingen om Norge.» Aftenposten, 15.8.2006 (K 2006:011).

Brochmann, Grete: «Statsborgerskap i det nye Norge.» Morgenbladet, 23.6.2006.

Ekberg, Espen & Jon Vatnaland: «Coop i 100.» Dagbladet, 27.6.2006.

Enjolras, Bernard: «Idrettens økonomi og pengestrømmer i kraftig endring». Idrett & Anlegg, august 2006.

Gulbrandsen, Trygve: «Unionisation: The Norway way». Families in Business, July/august 2006, no. 27.

Gullestad, Marianne: «Om å se og bli sett». Klassekampen, 29.3.2006.

Gullestad, Marianne: «Orientalisme på norsk». Morgenbladet, 5.5.2006.

Langeland, Nils Rune: «Barneteater om AKP(ml). Anmeldelse av Hans Petter Molands filmatisering av Gymnaslærer Pedersen». Dag og tid, 18.2.06.

Langeland, Nils Rune: «Den lykkelige 68-generasjonen». Aftenposten, 17.07.06.

Langeland, Nils Rune: «Djevel på høgløys dag». Klassekampen, 15.7.06.

Langeland, Nils Rune: «Dødsforakta til islamistane». Aftenposten, 15.9.06.

Langeland, Nils Rune: «Men dette var livet ditt, Kjell Magne!» Dag og tid, 10.11.06.

Langeland, Nils Rune: «Nye amerikanske mytar». Aftenposten, 18.12.06.

Langeland, Nils Rune: «Pappvin-dekadensen». Klassekampen, 28.1.06.

Langeland, Nils Rune: «Rase og demokrati». Klassekampen, 26.5.06.

Langeland, Nils Rune: «Solid og velkjend Samtiden». Morgenbladet, 8.9.06.

Langeland, Nils Rune: «Vestkantsosialismen». Klassekampen, 15.3.06.

Langeland, Nils Rune: «Viktig norsk samtidshistorie. Anmeldelse av Paul Knutsen: Livet før døden - Human-Etisk Forbund 1956-2006». Fri Tanke, 01-06.

Lidén, Hilde: «Minoritetsungdom som samtidsspeil». www.samfunnsforskning.no, 26.7.06.

Lidén, Hilde: «Vold i serieekteskap». Dagbladet, 23.1.06.

Lorentzen, Håkon: «Det globale sivilsamfunn - og det lokale». www.samfunnsforskning.no, 19.7.2006.

Rogstad, Jon: «Mitt skip er belastet med....» Sosiolognytt, nr. 4-2006.

Schøne, Pål: «Kontantstøtten: en trussel mot den norske modellen?» Lederartikkel, Søkelys på arbeidsmarkedet, 1/2006.

Schøne, Pål: «Store utfordringer». Lederartikkel, Søkelys på arbeidsmarkedet, 2/2006.

Sivesind, Karl Henrik: «Frivillig arbeid i Norge». NopusNytt, nr. 4-2006.

Teigen, Mari: «Hver sin verden?» Dagbladet, 15.9.06.

# INSTITUTE ECONOMY

Institute activities are funded in the main by the Norwegian Research Council and the public sector. Commissions from the private sector at home and abroad represent a smaller fraction of our revenue (Figure 1).

Projects generate income through overhead, In 2006 income generated amounted to NOK 8,628,686, covering administrative, service-related and infrastructure costs.

In addition to project revenue, the Norwegian Research Council allocates an adjustable annu-

al basic grant. In 2006, it was NOK 7,430,000 or 19 per cent of the Institute's overall revenue of NOK 38m. The Norwegian Research Council also finances the Institute's Strategic Institute Programmes (SIP), accounting for around 6 per cent of overall 2006 revenue.

The Norwegian Research Council is our main source of funding, and in terms of the average non-university research institution, significantly more important (Figure 2).

Figure 1. Main financial sources. Mill. NOK per year

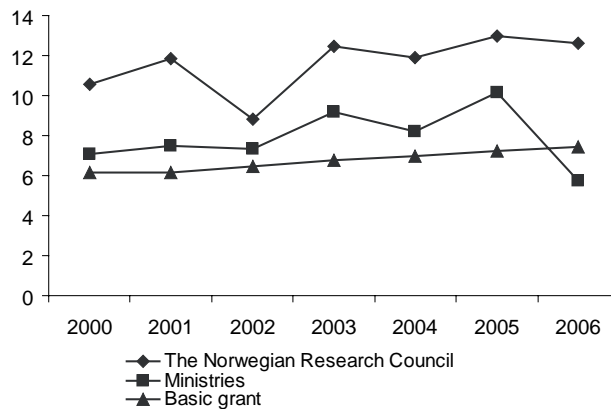


Figure 2. Income flow: Institute for social research and the sector as a whole

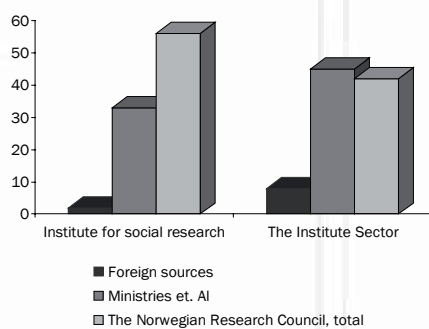
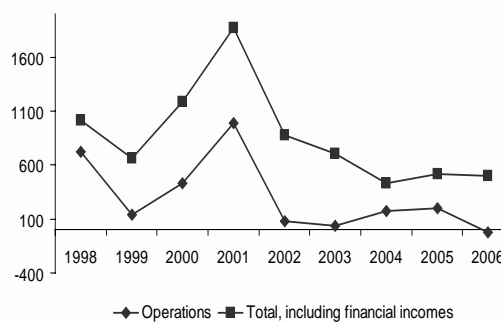


Figure 3. Annual results, 1998-2006



## INTERNATIONAL COOPERATION 2006

The Institute for Social Research promotes international cooperation through projects, publishing, visits and assignments in international organisations. Cooperation with excellent institutions at home and abroad contributes to increased quality and higher competence. About one third of the Institute's projects have foreign partners.

### PROJECT PARTNERS

In 2006 the researchers at ISF had project partners at the following international institutions:

- Aalborg University, Denmark
- Arbetslivsinstitutet, Stockholm, Sweden
- Australian National University
- Byggðastofnun, Iceland
- Centre National de la Recherche Scientifique, France
- Centre de Recherche et d'Information sur la Démocratie et l'Autonomie, Paris, France
- Centre for Economic Research and Environmental Strategy, (CERES) Greece
- CIRIEC Université de Liège, Belgium
- Ecole nationale d'administration publique, Québec, Canada
- European Centre for Social Welfare Policy and Research, Vienna, Austria
- Faculty of Economics and Business Administration, University of Iceland
- Fondazione Eni Enrico Mattei, Italy
- Göteborg University, Sweden
- Institute of Education, United Kingdom
- Institute of Social Work and Social Education, Frankfurt, Germany
- IPRAUS - Institut Parisien de Recherche: Architecture, Urbanisme, Société, France
- Janfnsrettisstofa, Iceland
- Johns Hopkins University, Baltimore, USA
- Labour Institute for Economic Research, Helsinki, Finland
- Lund University, Sweden
- McGill University, Montreal, Canada
- Mid-Sweden University
- Nationaløkonomisk institutt, Århus University, Denmark
- Odysseus - Academic Network of Lawyers, Brussels
- Open University Milton Keynes, United Kingdom
- Panteion University, Athens, Greece
- Policy Studies Institute, London, United Kingdom
- Roskilde University
- Social Science Research Center Berlin (WZB), Germany
- STAKES, Helsinki, Finland
- Stockholm University
- Tallinn University, Estonia
- The Aarhus School of business, Denmark
- The Peace Institute, Slovenia
- The Research Institute of the Finnish Economy (ETLA), Finland
- Tilburg, University, Netherlands
- Trade Union Institute for Economic Research, Stockholm
- Turku University
- Universidad de Valencia, Spain
- Universidade da Madeira, Portugal
- Universidad del Zulia, Venezuela
- Universitat de Girona, Spain
- Université de Liège, Belgium
- Université de la méditerranée, Marseille, France
- Université de Paris I, France
- Université de Rouen, France
- Université Panthéon-Assas (Paris 2) Equipe de Recherche sur le Marchés, l'Emploi et la Simulation (ERMES), France
- Université Catholique de Louvain, Belgium
- Université de Quebec à Montréal, Canada
- Universiteit van Amsterdam, Netherlands

- University of Bamberg, Germany
- University of California, USA
- University of Cologne, Germany
- University of Copenhagen, Denmark
- University of Brescia, Italy
- University of Duisburg-Essen, Germany
- University of Helsinki
- University of Latvia, Riga
- University of Ljubljana, Slovenia
- University of Mannheim, Germany
- University of Milano, Italy
- University of Ngaoundéré, Cameroun
- University of Siena, Italy
- University of Southern Denmark
- University of Strathclyde, Scotland
- University of Toronto, Canada
- University of Twente, Holland
- University of Vienna, Austria
- University of the West of England
- University of Zurich, Switzerland
- Uppsala University, Sweden
- Verket för näringslivsutveckling, Stockholm, Sweden
- Vienna University of Economics and Business, Austria
- Westfälischen Wilhelms-Universität Münster, Germany
- Zentrum für Europäische Wirtschaftsforschung (ZEW), Germany

## ASSIGNMENTS IN INTERNATIONAL SCIENTIFIC ORGANISATIONS

The researchers had assignments in the following international scientific organisations:

- Chaire d'Economie Sociale, Université de Québec à Montréal
- Civil Society and New Forms of Governance in Europe (CINEFOGO)
- The Comparative Study of Elections and Representative Democracy (CSES)
- Cost Action 23: The Evaluation of European Labour Market Programmes
- EMES European Research Network
- EU Expert Network on Gender Equality in

- Employment and Social Inclusion
- European Association of Labour Economists (EALE)
- European Consortium for Sociological Research (ECSR)
- European Sociological Association
- European Science Foundation
- European Voluntary Associations in the Modern and the Contemporary Period
- International Committee for Research into Election and Representative Democracy (ICORE)
- International Scientific Commission of CIRIEC on Social and Cooperative Economy
- International Political Science Association
- International Sociological Association
- Modélisation appliquée trajectoires institutionnelles stratégies socio-economiques (MATISSE) Université Paris I, Pantheon-Sorbonne
- New Opportunities for Research Funding Agency Co-operation in Europe (NORFACE) ERA-Net

## ISF ABROAD

ISF researchers were invited to present research and/or deliver lectures by the following institutions:

Guest lectures:

- Indiana University, USA
- Northwestern University, USA
- Università Cattolica, Milano, Italy
- Universitat de Girona, Spain
- University of Siena, Italy

Guest visits:

- Ecole Nationale d'Administration Publique, Québec, Canada
- Northwestern University, Evanston, USA
- Université de Québec à Montréal, Canada
- University of Oxford, UK

## ISF EVENTS 2006

### ISF SEMINARS

#### *Høyesteretts makt og avmakt*

Seminar about the history of the Norwegian Supreme Court. Introductions by Nils Rune Langeland, Dag Michalsen, Erling Sandmo and Ingse Stabel  
Institute for Social Research, Wednesday January 18

#### *Demokratisk kapitalisme*

Seminar about democratic capitalism. Introductions by Francis Sejersted, Sissel Myklebust and Rolf Utgård  
Institute for Social Research, Wednesday April 5

#### *Fotball – det viktigste i verden*

Seminar about the role of football in society. Introductions by Hans K. Hognestad, Arve Hjelseth, Cathrine Sandnes, Ørnulf Seippel and Ingebrigt Steen Jensen  
Institute for Social Research, Wednesday May 31

#### *Reframing justice in a globalizing world*

*Vilhelm Aubert Memorial Lecture*  
Seminar with Nancy Fraser.  
Institute for Social Research, September 25

#### *Flertallsregjering – løsningen på alle styringsproblemer?*

Seminar about the advantages and disadvantages of majority government. Introductions by: Martin Kolberg, Hege Skjeie, Fredrik Sejersted  
Institute for Social Research, Wednesday October 18

#### *En norsk modell for eierskap? Statoil som lærestykke*

*Arvid Brodersen Lecture*  
Lecture by Harald Norvik about the Norwegian ownership model, exemplified by Statoil.  
Institute for Social Research, November 1

#### *Tro, håp og gavebok – Integrasjonsløfte(t) og en ny lov om statsborgerskap*

Seminar about the new citizen law and the new citizen's ceremony. Introductions by Libe Rieber-Mohn, Grete Brochmann and Olaf Aagedal.  
Institute for Social Research, Thursday November 16

### CONFERENCES AND WORKSHOPS

#### *Workshop on the Use and Analysis of Employer-Employee Data*

Institute for Social Research, January 9 – 11.

#### *Frivillighet i Oslo-idretten*

Seminar and debate about the meaning of voluntary work in sports  
Institute for Social Research, March 15

#### *Intersectionality - a fruitful concept?*

Seminar with professor Harriet Bradley, University of Bristol  
Institute for Social Research, April 28

#### *Jubileumsseminar – Det norske sett med flere øyne*

Seminar to celebrate Marianne Gullestad's 60th birthday  
Institute for Social Research, May 2

#### *Workshop: «The segregation of work in the new economy»*

Institute for Social Research, May 15-16

#### *Nordisk valgforskermøte*

Seminar with Nordic psephologists  
Institute for Social Research, May 18-19

#### *Jubileumsseminar – Civil society and Globalism*

Seminar to celebrate Håkon Lorentzen's 60th birthday.  
Institute for Social Research, June 14

#### *CINEFOGO meeting «Citizen Participation in Policy Making»*

University of University of the West of England, Bristol,  
June 15-16

#### *Politisk representasjon og deltakelse: Kjønn og etnisitet*

Seminar about political representation and participation: gender and ethnicity  
Institute for Social Research, September 22

#### *CINEFOGO Conference «The Role and Organisation of European Civil Society – Its relationship to state and business and its importance for welfare provision and social cohesion»*

Comwell Hotel, Roskilde, November 15-17

#### *EVA Conference «Nordic Civicness Revisited in the Age of Association»*

Tallinn University, November 23.-25.

## VILHELM AUBERT MEMORIAL LECTURE

In cooperation with Department of Sociology and Human Geography at the University of Oslo, ISF annually hosts the «Vilhelm Aubert Memorial Lecture».

This year's lecturer was Nancy Fraser, professor of Political Philosophy at the New School for Social Research, New York, USA.

Seminar at Institute for Social Research, September 25:  
*Reframing justice in a globalizing world*

Open lecture at the University of Oslo, September 26:  
*Abnormal justice*



Francis Sejersted at a seminar about democratic capitalism, Institute for Social Research, April 5, 2006

## ARVID BRODERSEN MEMORIAL LECTURE

From 1998 on P.M. Røwdes has held an annual open lecture in memory of Arvid Brodersen. This year's lecture was on November 1. at Institute for Social Research.

Lecture by Harald Norvik: *En norsk modell for eierskap? Statoil som lærestykke.*



Grete Brochmann and State Secretary Libe Rieber-Mohn at a seminar about the new citizen law and the new citizen's ceremony, Institute for Social Research, November 16, 2006



Nancy Fraser at the Vilhelm Aubert Memorial Seminar, *Reframing justice in a globalizing world*, Institute for Social Research, September 25, 2006



Cathrine Sandnes and Arve Hjelseth at a seminar about the role of football in society, Institute for Social Research, May 31, 2006